

3. Povprečja

Tanja Hribar

1. Naloga:

$\bar{y} = 311,1$
 $\sigma_y = 314,84$

Tretjinski odseki:

1-333:
 $\bar{y} = 59,2$
 $\sigma_y = 37,3$

334-666:
 $\bar{y} = 221$
 $\sigma_y = 60,8$

667-999
 $\bar{y} = 653,1$
 $\sigma_y = 322,1$

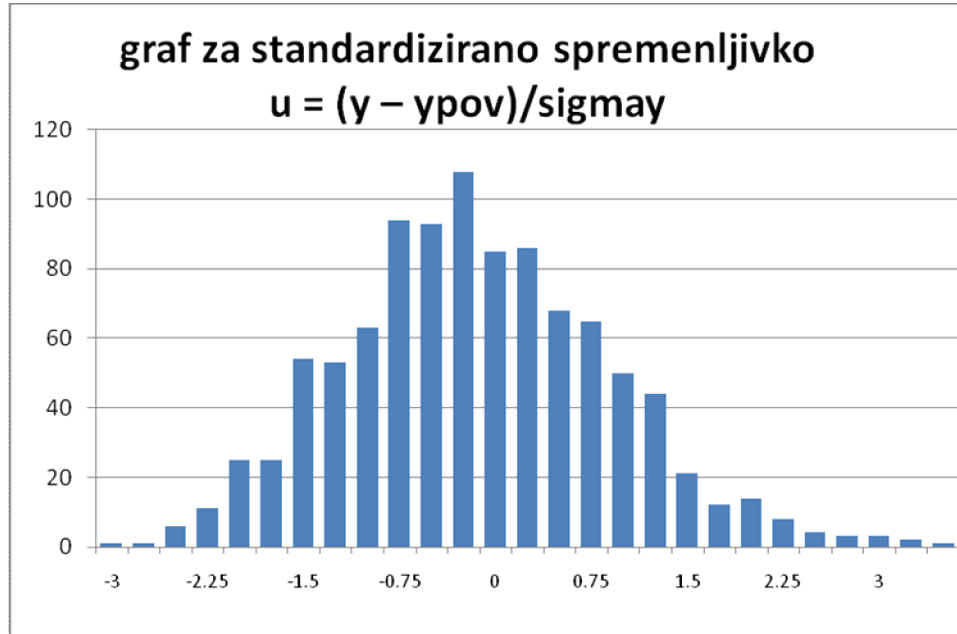
2. Naloga:

Agxx:

ypov=17,4

sigmay=4,17

muy=266,85



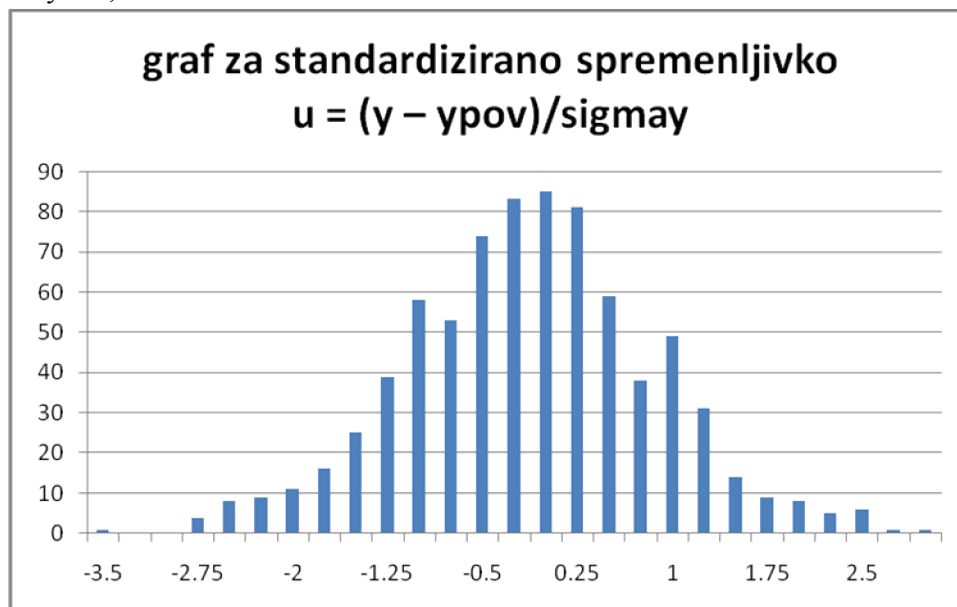
Ozadje:

Brez predalčenja

ypov= $1,8 \cdot 10^{-8}$

sigmay= $7 \cdot 10^{-5}$

muy=64,15



S predalčenjem:
 $\mu_{\text{pov}} = -1,5 \cdot 10^{-7}$
 $\sigma_{\text{may}} = 0,0004$
 $\mu_{\text{y}} = -97,98$

3. Naloga:

$\mu_{\text{pov}} = 0,000017$
 $\sigma_{\text{may}} = 0,7$